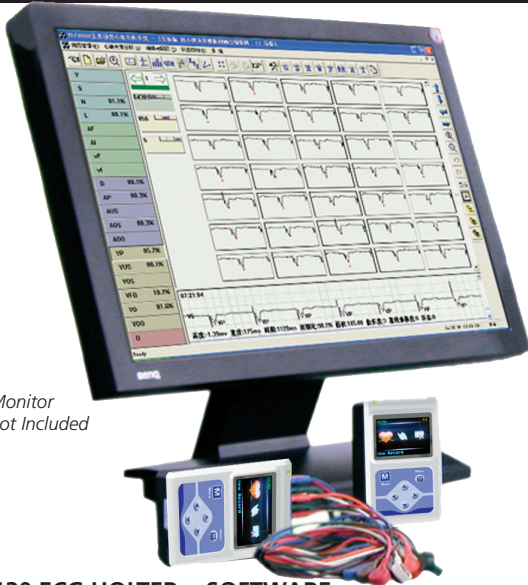
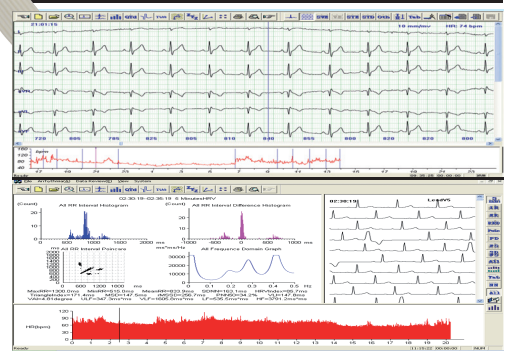


HOLTER ECG SYSTEM - 24 HOURS MONITORING



Monitor not included



• 35130 ECG HOLTER + SOFTWARE

ECG Holter system includes ECG recorder and software connectable to a computer system or laser printer. The recorder has built-in flash storage media to increase memory capacity. The sampling rate of 1,000 sampling/sec has improved the quality of waveform.

Accuracy of the system is ensured by AHA and MIT data.

Features:

- windows software interface (GB, IT, PL)
 - quick and accurate analyzing system
 - special editing system of R point
 - perfect analysis function of ST segment
 - analysis function of T wave of all channels and T wave trend graph
 - review of ECG trend graph
 - analysis system of HR variability, providing regular SDNN, SDANN, RMSSD, LF, HF, time domain and frequency domain
 - QT analysis and QT trend graph
 - acquire pacing ECG directly without separate channel;
- Also have the functions of VCG, VLP, TVCG, HRT, TWA

Recorder:

- 12 channel Synchronized ECG Acquisition
- small ECG recorder with OLED colour screen to display real time ECG waveform and review storage data.
- capacity up to 2G
- selectable sampling rate, 200, 500, 1,000 sampling/sec
- sampling accuracy: 12 bit
- built-in FLASH storage media, to prevent the flash card from damage due to repeated insertion and pull out
- USB interface
- operating system: Win 98, 2000, XP, 7, 8, 10



• 35131 ECG CABLE - spare

TECHNICAL SPECIFICATIONS

Scale voltage: 1mV±5%
 Standard sensitivity: 10mm/mV ±5%
 Noise level: ≤30µV
 CMRR: ≥60dB
 Frequency response: 10Hz as benchmark, 0.5Hz~55Hz; -3dB
 Time constant: >3.2s
 Scan speed: 25mm/s ±5%
 Enduring polarization voltage: ±300mV

Least measure signal: 50µV p-p
 Interference between channels: scan track deflection (result from interference between channels) <0.5mm
 Product safety type: type B (internally powered)
 Size: 111 (L) x60 (W) x25 (H) mm
 Net weight: 105 g (without battery)

STANDARD ACCESSORIES

- 1 Holter recorder
- 1 CD with software
- 10 leads patient cable
- 10 disposable ECG sensor
- 1 pouch for hanging recorder
- 1 USB cable for data downloads
- Instruction Manual (GB, IT)



PC-ECG WITH INTERPRETATION SOFTWARE AND USB PORT

• 33320 PC-ECG + ECG LAB SOFTWARE

Innovative PC-ECG device that can be connected to your PC via USB port. No power cable is required as it is powered through the USB PC cable. The unit is supplied with a 10 banana plug ECG cable (length 295 cm) and a powerful interpretation software (GB, FR, IT, DE, ES, PT, CN).

Main software features:

- 12 lead resting ECG with auto interpretation (ECG)
 - vector ECG (VCG)
 - sampling screen colour customization
 - standard or thermal paper print, B&W or colour
 - auto interpretation On or Off
 - tests comparison
 - multi hour ECG monitoring with holter analysis
 - simple exercise stress test with report
 - e-mail, PDF, ASCII, HL7, Dicom, GDT Interfaces
 - multi ECG report formats
 - measurement table
 - 90s resting ECG full disclosure
 - 33328 ECG CABLE - SPARE
 - 33321 PC-ECG+CARDIOLOGY SOFTWARE
- Same as code 33320 but with the following specialist functions:
- timed vector ECG (TVCG)
 - SAECG (Signal Averaged ECG) ventricular late potentials analysis
 - QTd analysis
 - hour ECG
 - High Frequency ECG (HFECG)
 - Frequency Cardiogram (FCECG)
 - simple exercise ECG

• 33322 CARDIOLOGY SOFTWARE to upgrade 33320 into 33321

TECHNICAL SPECIFICATIONS

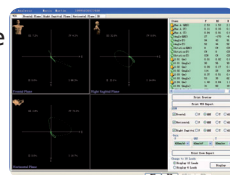
Communication port: USB - Support HL7, Dicom interface
 Size: 120x85x28 mm - 190 g
 Power source: 5V DC (from PC USB port)
 Patient insulation: 4000 V AC
 Defibrillation protection: built-in patient cable
 Sample rate: 10240Hz - Sample accuracy: 16 bit
 PC minimum requirements: Windows 2000, XP Vista and Windows 7
 CPU ≥ 1 GHz - HD ≥ 40 G - RAM ≥ 256 M

STANDARD ACCESSORIES

- 4 limb electrodes
- 6 chest electrodes
- Patient cable 10 leads,
- 10 electrodes
- USB pen driver
- CD software
- Banana plug



ECG CAD gram to locate coronary artery disease and ischemia

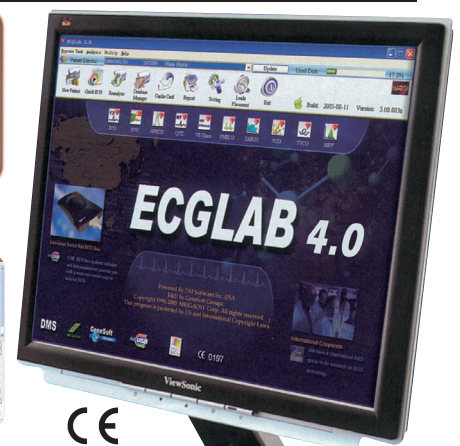


3-VCG analysis



QT Dispersion QTD analysis with chroma map

Above 3 pictures refers to code 33321



CE 0197

PC not included



Only 550 g

4 mm pins