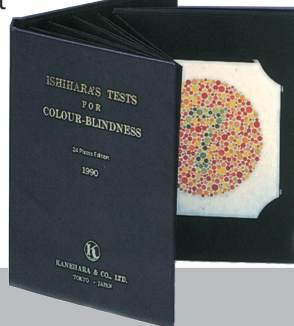


ISHIHARA COLOUR TEST

ISHIHARA Colour TEST

These series of plates are designed to provide a test which gives a quick and accurate assessment of colour vision deficiency of congenital origin. This is the most common form of colour vision disorders. Most cases of congenital colour vision deficiency are characterized by a red-green deficiency which may be of two types: a protan type which may be absolute (protanopia) or partial (protanomalìa), and a deutan type which may be absolute (deutanopia) or partial (deutanomalìa).



GIMA code	ISHIHARA COLOUR TEST
31290	Book of 10 plates for illiterates
31291	Book of 24 plates
31292	Book of 38 plates

STEREOPSIS TESTS

- 31283 FLY STEREO ACUITY TEST
- 31284 BUTTERFLY STEREO ACUITY TEST

Designed to rapidly test for amblyopia and strabismus using gross to fine stereopsis (4800 to 20 sec of arc):

- graded circle test from 400 sec now down to 20 sec
- new technology → no monocular clues
- answer key on back cover
- includes pair of standard polarised viewers

- 31285 RANDOM DOT STEREO ACUITY TEST

Designed to rapidly test for amblyopia and strabismus in early and non-readers and non-verbal children and adults

- expanded random dot lea test (500, 250, 125, 63 sec of arc)
- graded circle test now down to 12.5 sec
- answer key on back cover
- includes pair of standard polarised viewers

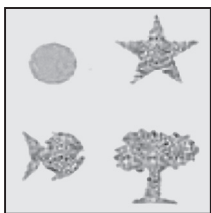


STEREOPTIC TEST

- 31293 STEREOPTIC TEST

This test is performed at a distance of 30-40 cm and allows evaluation of the cooperation between the two eyes to form a single image to the brain from the two image provided separately by each of the two eyes.

It can be used for children from the age of one year and adults if you suspect strabismus, amblyopia or visual reduction of one or both eyes.

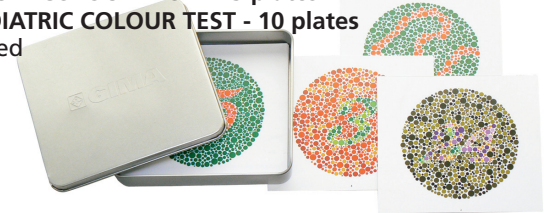


Gima stereoptic test contains one ball, one fish, one star, one tree. Ball can be seen by one eye only.

GIMA COLOUR TEST

- 31287 GIMA ADULT COLOUR TEST - 15 plates
- 31286 GIMA PEDIATRIC COLOUR TEST - 10 plates

Single plates packed in a practical aluminium box.



WORTH LED LIGHT TEST

- 31289 WORTH LED LIGHT TEST - with red/green glasses

The Worth 4 dot test, is a clinical test for suppression of either the right or left eye. Suppression occurs during binocular vision, when the brain does not process the information received from either of the eyes. This is a common adaptation to strabismus, amblyopia, and aniseikonia.

Battery not included, glasses included.

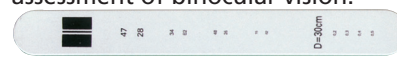


LANG STEREO TEST

- 31294 LANG STEREO TEST I
- 31295 LANG STEREO TEST II

Stereotest I was created to simplify stereopsis screening in children. It is based on two principles: on random dots and on cylinder gratings.

Stereotest II is a further development and helps the assessment of binocular vision.



- 31296 LANG FIXATION STICK

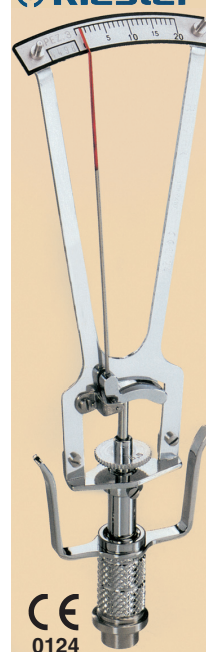
31297

- 31297 LANG FIXATION CUBE - white

31298

- 31298 LANG FIXATION CUBE - red

SCHIÖTZ TONOMETER



- 31220 SCHIÖTZ TONOMETER - straight scale

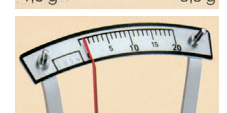
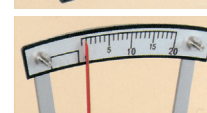
- 31222 SCHIÖTZ TONOMETER - inclined scale

A masterpiece of precision mechanism, measures intraocular pressure according to Prof. Schiötz standards.

Vital parts are made of stainless steel. High quality agate bearing for extremely long service life.

Set 3 weights included (5.5-7.5-10 g). Scale specification 5. In black deluxe case with velvet-look inserts.

Perfect reading of the scale with red pointer. Made in Germany.



31220 straight

31222 inclined